

QUIET GLIDE ROLLING LADDER

INSTALLATION GUIDE

QG.200-300-500-700 Series Hardware

A wooden rolling ladder is positioned in a modern kitchen. The ladder is made of light-colored wood and has black wheels at the base. It is leaning against a white wall. In the background, there are shelves with books, a vase with flowers, and a counter with wine bottles and glasses. The floor is made of light-colored wood with a herringbone pattern.

**QUIET
GLIDE**

General Installation & Specification Guide

For QG.200, 500, 700 Series Hardware Kits

Special Application Notes/Cautions:

178mm clearance is required above the track's centerline when the ladder is in the storage position (to avoid contacting ceiling or crown molding), and at least 76mm is needed when the ladder is fully angled for climbing. (Figure 1a-b)

Step 1: Wall Preparation

- Do not mount track brackets directly onto a drywall surface, even if there is solid wood behind. Track brackets will eventually crush the drywall, potentially causing the track system to fail.
- Track brackets need to be installed directly onto a solid wood surface. If installing a Classic (aka Standard Double) Roller or Swivel Roller (200 or 700 Series), the ladder will need to be placed onto the track before fastening to wall track and adding End Caps.

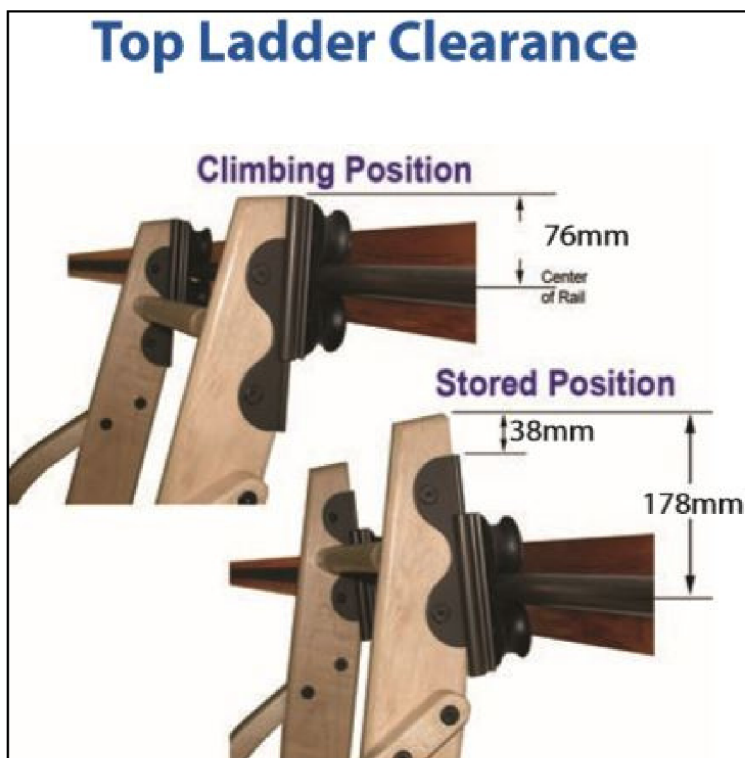


Figure 1a



Figure 1b

If not using a Splice Kit to connect multiple tracks or installing End Caps, skip to section: **Track Installation.**

Step 2: Splice and End Cap Installation

Special Application Notes/Cautions

If installing a **Classic (aka Standard Double) Roller or Swivel Roller** (200 or 700 Series), ladder will need to be placed onto the track before adding End Caps.

To connect track rails using the Quiet Glide Splice Kit (QG.41) follow these steps:

1. Insert half the length of the roll pin into one of the track ends (Figure 1a).
2. Slide the steel bar halfway into the track and tighten one of the set screws (Figure 1b).
3. Line up the other track and slide it over the pin and bar, ensuring a snug connection (Figures 2a & b).
4. Complete the splice by tightening the remaining set screw.



Figure 1a

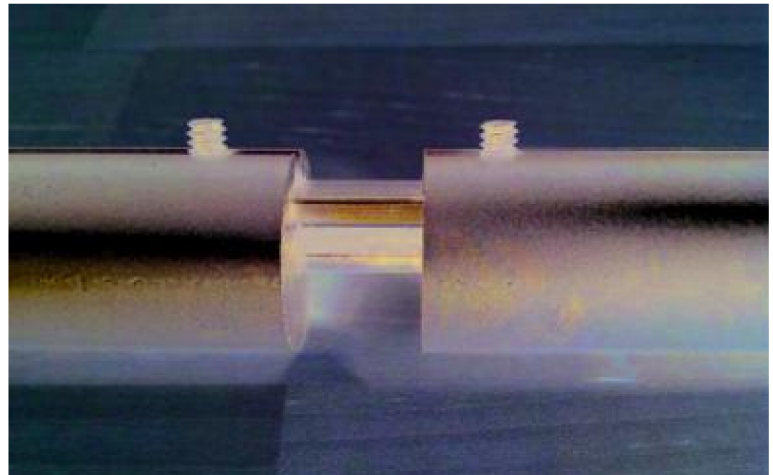


Figure 1b



Figure 2a

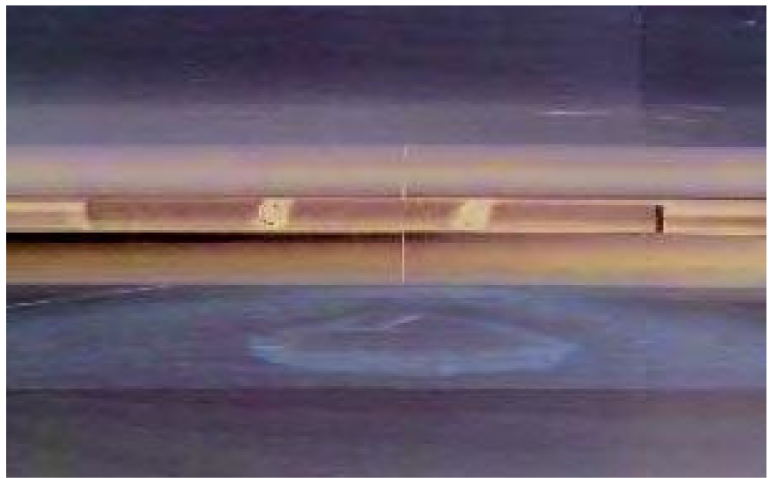


Figure 2b

Step 2: Splice and End Cap Installation continued

1. Slide all the brackets onto the track (brackets should be no more than 813mm apart).
2. Install the End Caps to each end of the rail.
 - a. If using a ladder hardware designed to stay attached to the track (such as the Classic Rolling and Swivel Rolling), slide your ladder onto the track before attaching the final End Cap.
3. Using a 1/4"-20 tapping tool, tap the ends of the track (Figure 3a and 3b).
4. Secure the end cap to the track using the supplied 1/4"-20 KD bolt and 4mm Allen wrench (Figure 3c).
5. End result is Figure 3d



Figure 3a

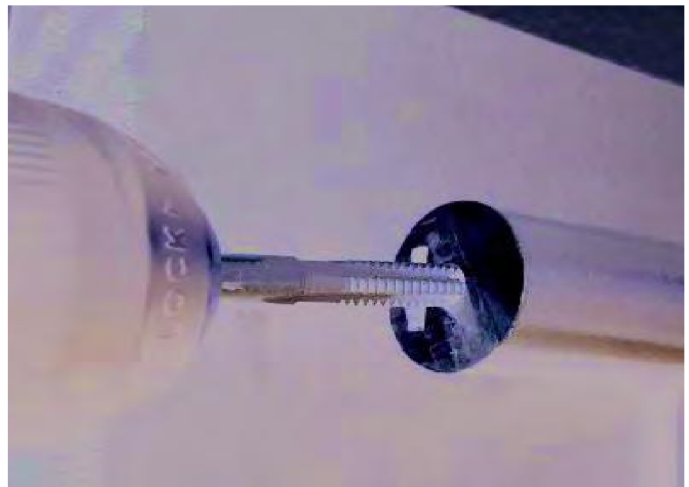


Figure 3b



Figure 3c



Figure 3d

Step 3: Track Installation

Special Application Notes/Cautions

If installing a **Classic (aka Standard Double) Roller or Swivel Roller** (200 or 700 Series), ladder will need to be placed onto the track before adding End Caps.

See **Curved Rail Radius Dimensions** for specifications on attaching curved rails to walls.

1. Slide all of the brackets into the channel in the metal track (if not done previously), approximating the spacing on your mounting surface.), approximating the spacing on your mounting surface. Brackets should be no more than 813mm apart (Figure 1a-1b)



Figure 1a



Figure 1b

2. Determine the center track installation height and mark the location for the bottom of the mounting brackets.
3. Hold the metal track up to the mounting surface, lining up your brackets with the planned locations marked. Mark the center of both the fastener holes. (Figure 3a-b)



Figure 3a



Figure 3b

4. Pre-drill your marked locations using 3mm bit for soft wood and 5mm for hard wood. (Figure 4)



Figure 4

Step 3: Track Installation continued

5. Bring your metal track with brackets to your mounting surface and fasten each bracket to the wood surface with the included screws. (Figure 5)



Figure 5

6. Use an accurate leveling device to ensure that the horizontal locations of the bracket and track are properly aligned (Figure 6).



Figure 6

7. Assuming your track has been correctly installed and is level, your ladder is now ready to be attached, if it was not attached previously.

8. Check your track rollers and ladder floor wheels are clean and free of debris and will not hit any obstructions when moving along the track.

9. Congratulations, your ladder is now ready for use! Please refer to our handy “Using Your Ladder” guide for correct usage and tips.

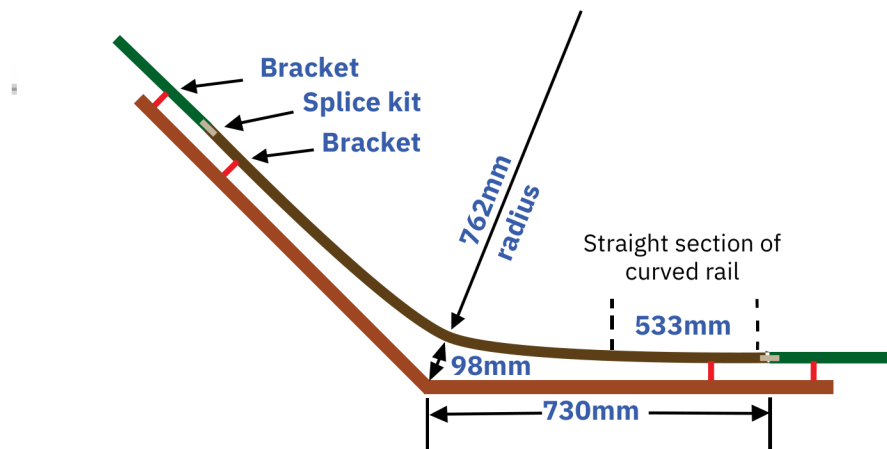
Curved rail radius dimensions

Special Application Notes/Cautions

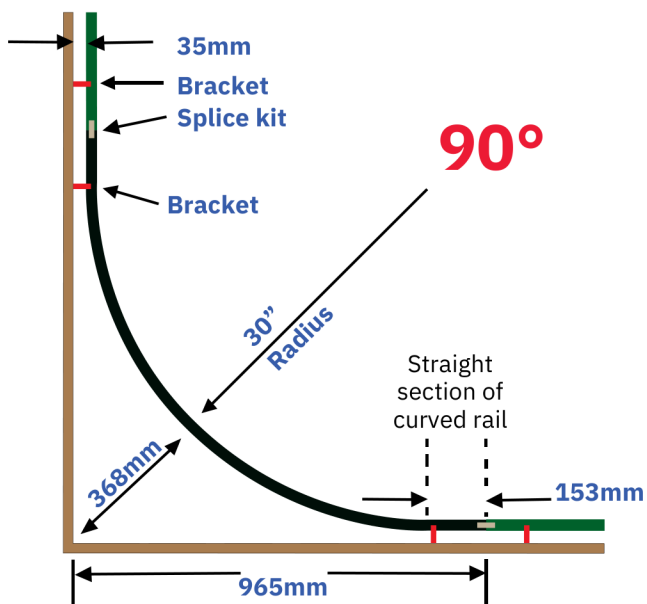
Only Swivel Roller hardware can be used with curved rails.

Classic (aka Standard Double), Rolling Hook and non-rolling hooked hardware cannot be using with curved rails.

135°



90°



90°

